

**Bluewest.de**

info@Bluewest.de

**ADDRESS:**

Neuer Wall 71, c/o WorkRepublic

20354 Hamburg

Germany

**TEL & FAX:** +49 40 99 99 94 42 9



**BLUE WEST**  
GmbH

## FLOOR SPRINGS

Access Solutions Consulting  
& Sales Company

For impressive entrances  
For high quality solutions  
For many applications



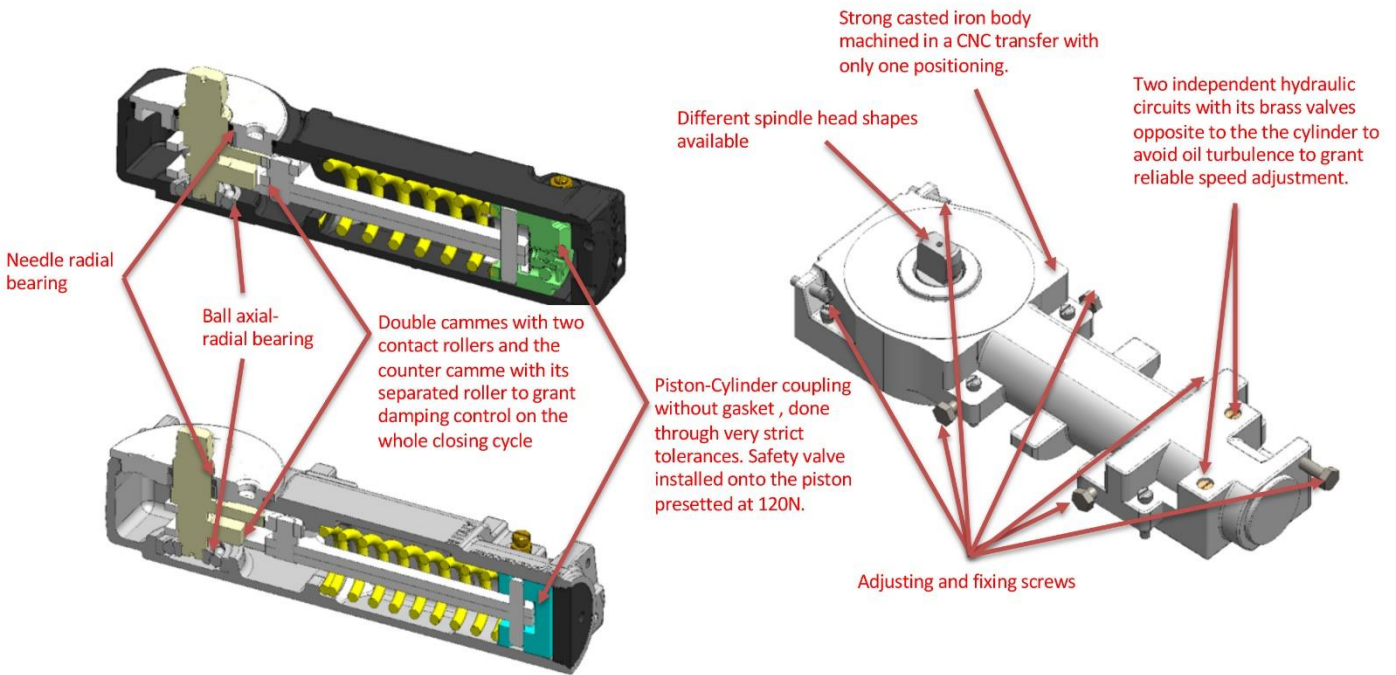
## FLOOR SPRINGS



**Floor springs** are devices designed to overcome potential human errors to ensure doors are closed automatically and not left open.

- I. Closers suitable to suit traffic and functionality.
- II. Closes the door reliably and perfectly with each operating cycle.
- III. Functions in a safe manner so users are not harmed, and the door set is not damaged.
- IV. Ensures door stay closed against air pressure. Especially when no latch are fitted.
- V. BS EN 1154

# FLOOR SPRINGS



## FLOOR SPRINGS



FLOOR SPRING: BDD-4-K3000  
EN1-3 120kg  
Maximum door width 1100 mm



FLOOR SPRING: BDD-4-M25  
EN1-5 120- 350 kg  
Maximum door width 1400 mm



FLOOR SPRING: BDD-4-M68  
EN 3 100 kg  
Maximum door width 950 mm

## FLOOR SPRING: BDD-4-K3000

This is a double acting door closer, particularly suitable for installation in doors with jamb or in situations where it is necessary to make the recess in the floor for the cement case completely outside the jamb. (for example, if there is a step close to the threshold or if you want to avoid digging the floor of two adjacent rooms). Highly reliable mechanics. Efficiency higher than 75%. Lasts for well over 10 years. It can be regulated inside the cement case, above all longitudinally to allow the use even where the hinge axes are different without moving the cement case. Quick and effective fixing in the cement case with just two screws, which control four tempered steel lateral blades. A single valve programs the desired closing speed from about 115° to 0°. An additional valve enables and regulates the latch speed from about 15° to 0°. Automatic mechanical slow down near the doorstop. Thermo constancy as standard. The cover is fixed to a small counterbalanced lever (movable, and self-centering) with two screws. This innovative fixing allows the cover to be always perfectly aligned with the door.

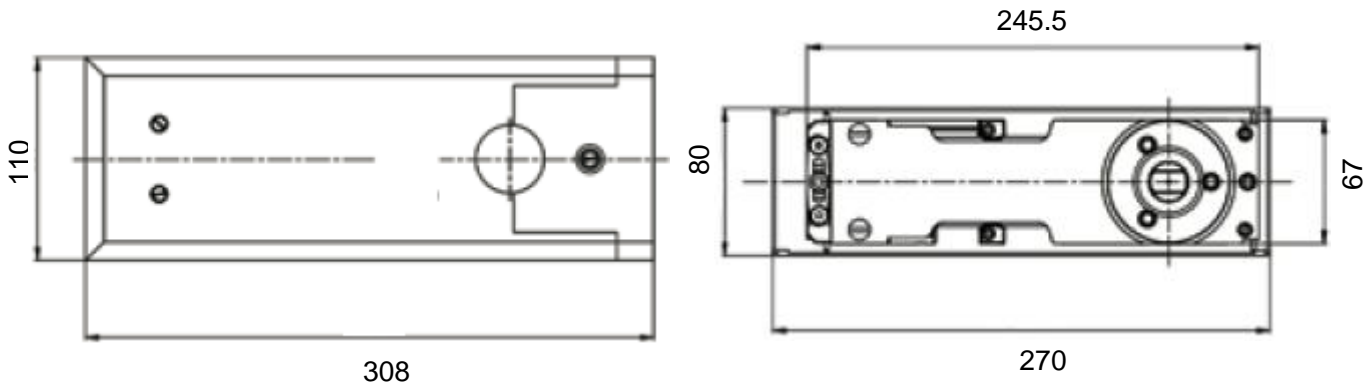
The rear part of the cover is inserted and fastened with a screw once the door is installed. It has a thin appendix of metal sheet that can be easily cut and shaped if a jamb requires this operation. If this step is forgotten, putting it does not imply dismantling the door. A single strength (factory pre-set) perfectly suits to 90% of doors. An additional force almost completely covers the remaining 10% of other doors.

We can supply a version with interchangeable spindle heads upon request. We can supply a version with an extended spindle upon request.



## Door Hardware

### FLOOR SPRING: BDD-4-K3000



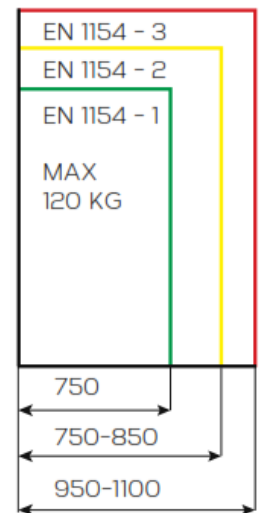
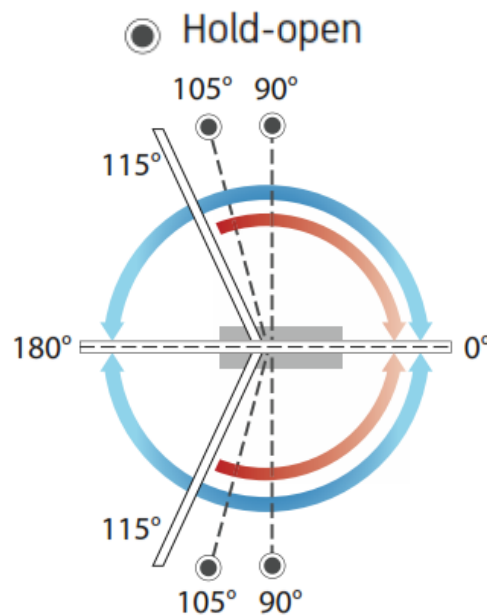
#### Standard finishes



Aluminium

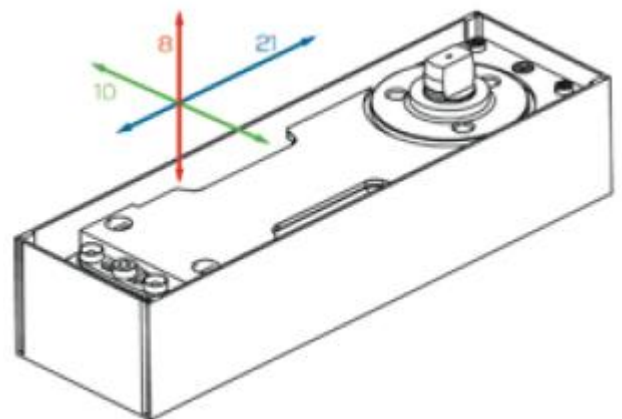
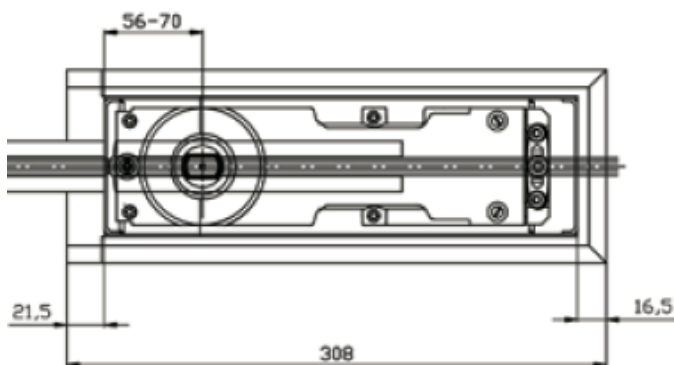
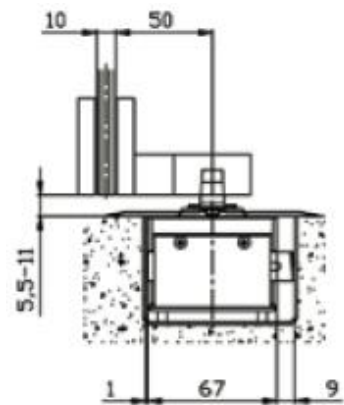
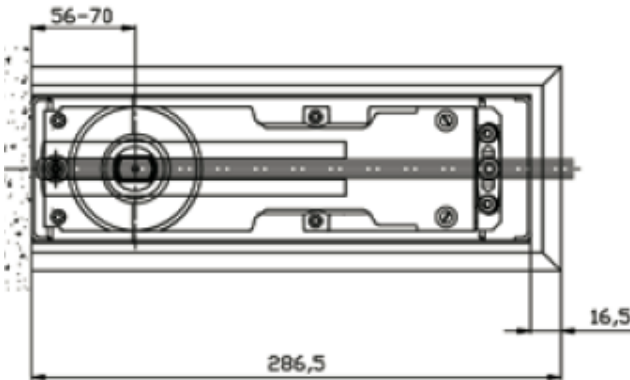
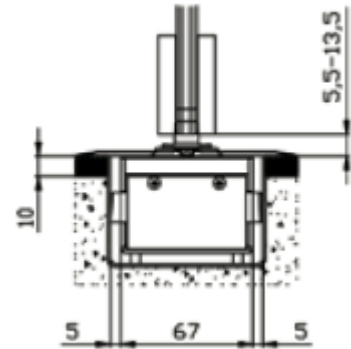
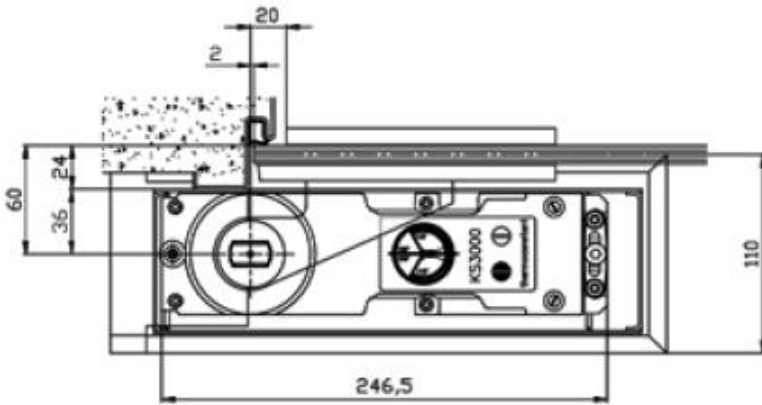
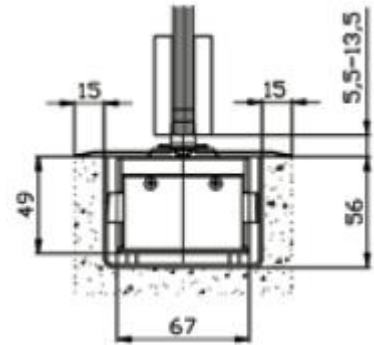
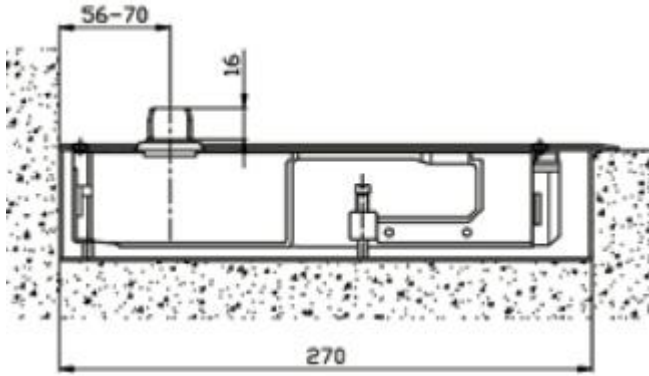
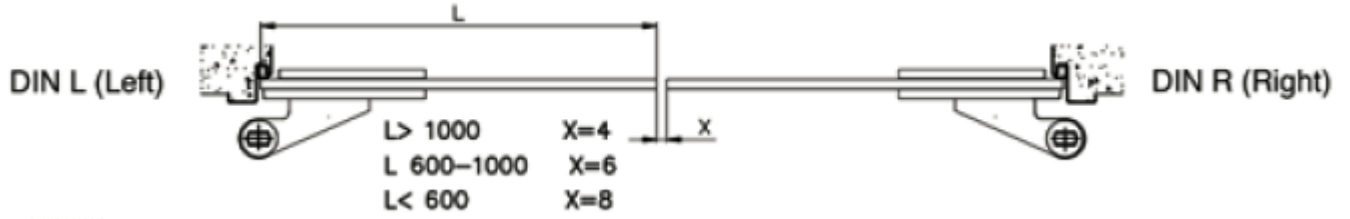


Stainless steel



Maximum door width	Exterior	Interior
Yellow Strength	750 mm	850 mm
Red Strength	1000 mm	1100 mm
Maximum door weight	120 Kg	
Dim. of cement case (mm)	80 x 270 x 56	
Weight of package	4.3 Kg	

Door Hardware



## FLOOR SPRING: BDD-4-M25

Highly reliable mechanics, assured by more than 5 million installed units. performance over 65%. Life higher than 10 years. Huge adjustment possibilities inside the cement case, above all longitudinally to allow the use even where hinge axes are very different.

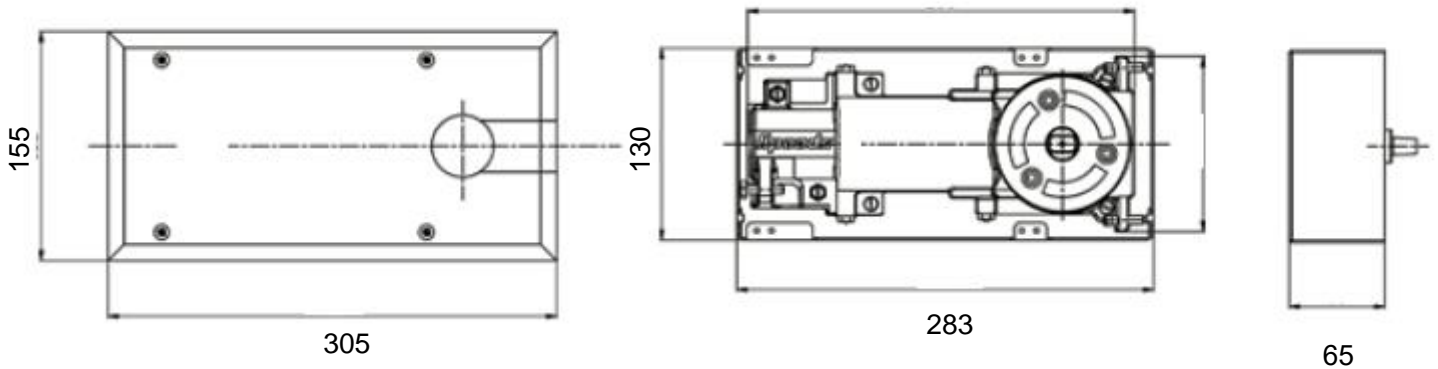
Two completely independent oil circuits to program the desired closing speed by two regulating valves: one from about  $115^{\circ}$  to  $15^{\circ}$  and the other from about  $15^{\circ}$  to  $0^{\circ}$ . Special execution for doors up to 350 kg upon request. The rear part of the cover is inserted and fastened by snapping it, after the door and the cover have been installed. If this step is forgotten, you can easily snap it without dismantling the door. A single strength (pre-set in factory) perfectly suits to 90% of doors. Two additional forces covers the remaining 10% of other doors back stop and back check from  $70^{\circ}$  upon request. We can supply a version with interchangeable spindle heads upon request. We can supply a version with an extended spindle upon request. Thermo constancy available upon request.





## Door Hardware

### FLOOR SPRING: BDD-4-M25



#### Standard finishes

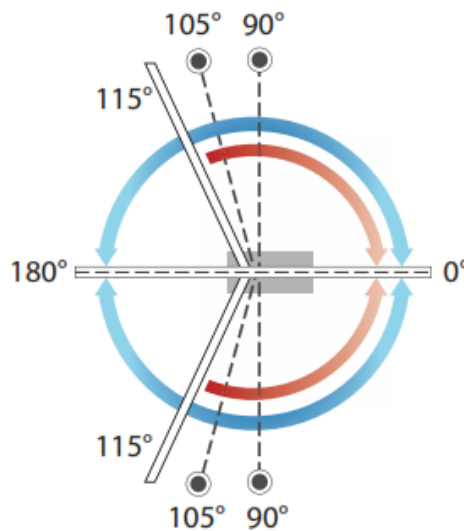


Aluminium



Stainless steel

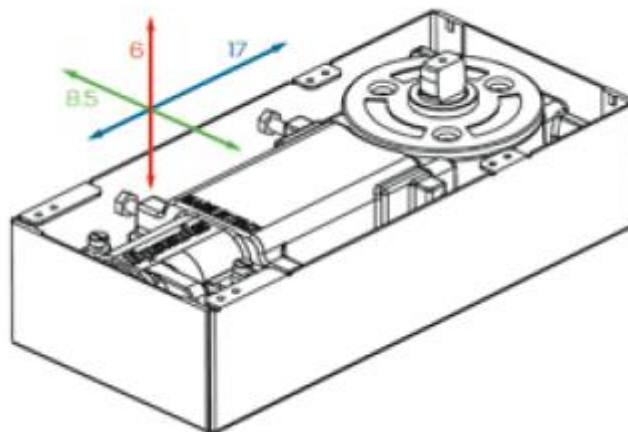
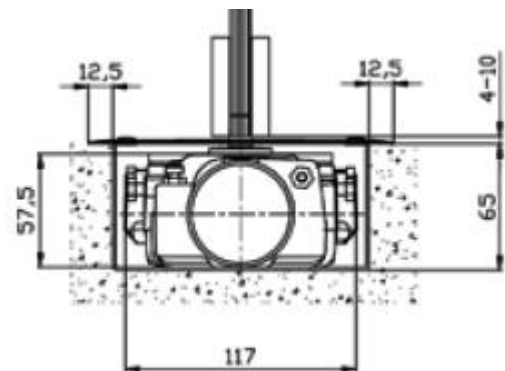
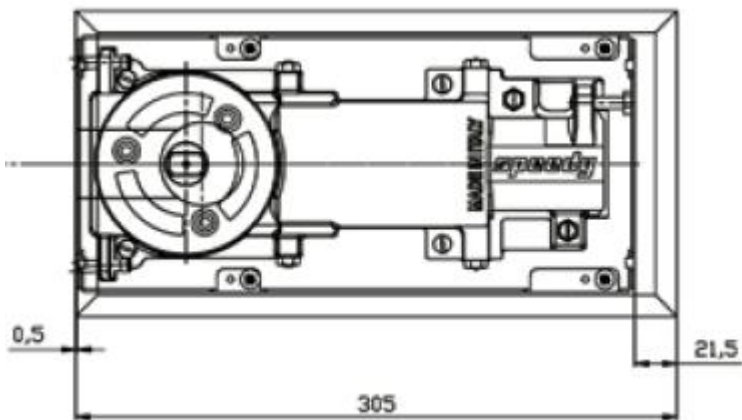
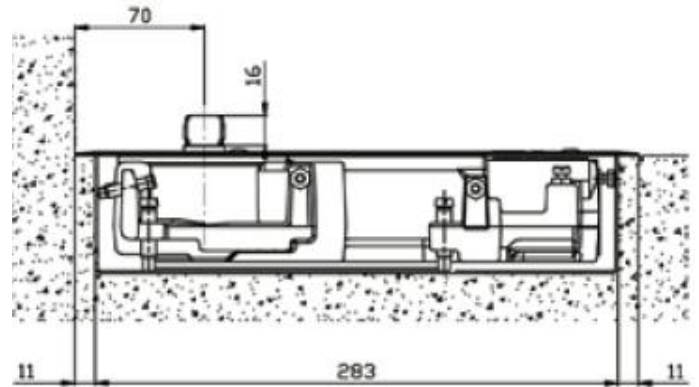
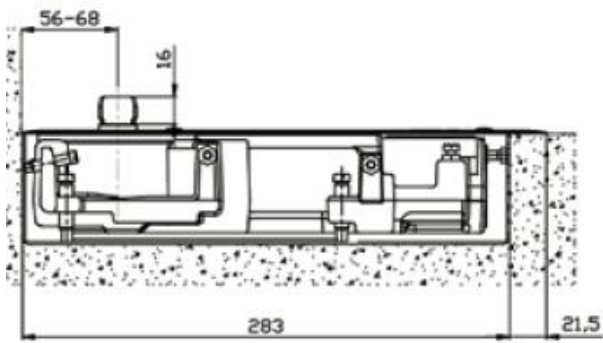
● Hold-open



EN 1154 - 4	MAX 200 KG
EN 1154 - 3	
EN 1154 - 2	
EN 1154 - 1	
MAX	120 KG
<750	
750-850	
950-1100	
1100-1400	

Maximum door width	Exterior	Interior
<b>Yellow Strength</b>	750 mm	850 mm
<b>Red Strength</b>	1000 mm	1100-1400 mm
<b>Maximum door weight</b>	120 Kg	
<b>Dim. of cement case (mm)</b>	130 x 283 x 65	
<b>Weight of package</b>	6.4 Kg	

## Door Hardware

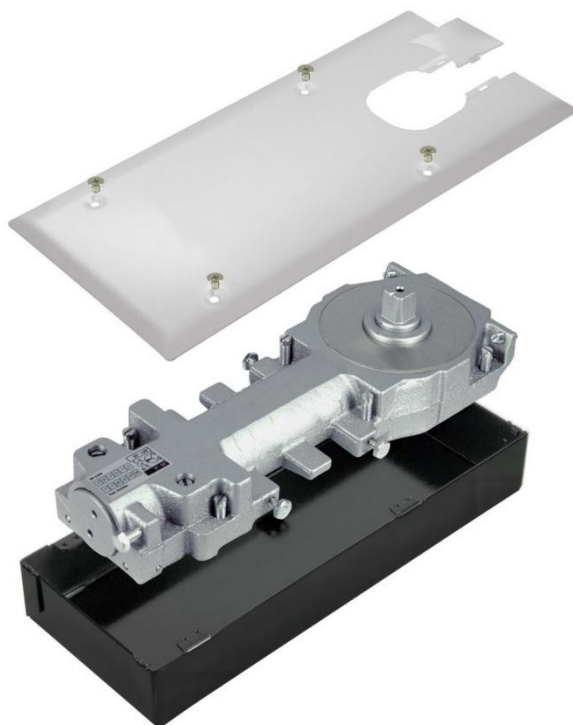


## FLOOR SPRING: BDD-4-M68

This is the Speedy “entry level” door closer that offers an excellent price in relation to its performance. This door closer is particularly suitable for installations that require a minimum depth of excavation for thin slab applications. It was designed and built to be installed inside where there is underfloor heating or where there are structural reinforcement in the slab.

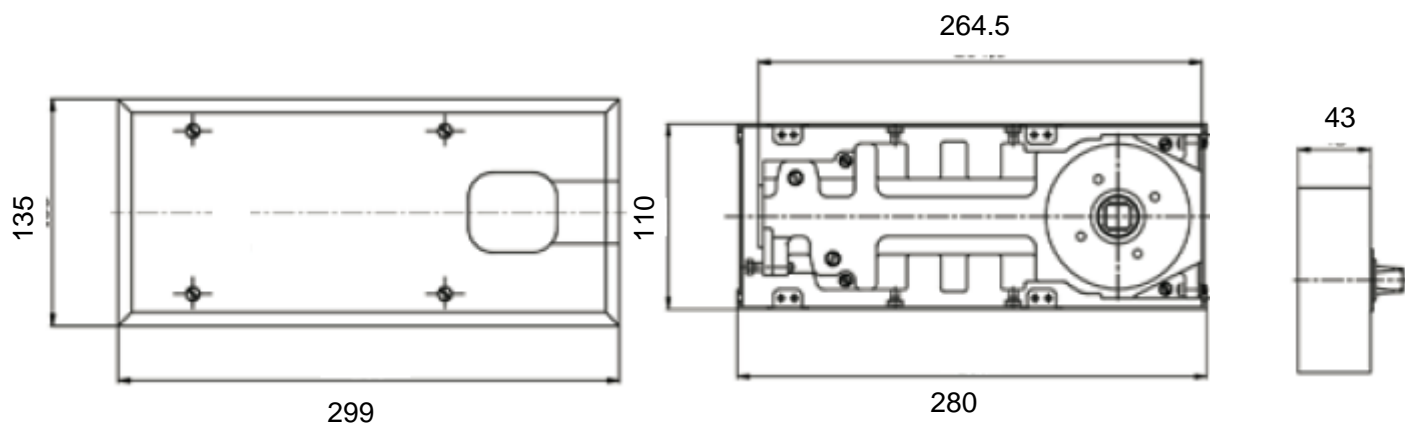
Due to the small size of its parts, especially the piston, it is not recommended for high traffic areas use. 7 screws guarantee an effective blocking within the cement case. A stainless steel ring in the same finish of the cover, is supplied to guarantee the cover uniformity finish. Highly reliable mechanics. Efficiency higher than 65%. A single strength (pre-set in factory) perfectly suits to 90% of doors.

Two completely independent oil circuits for to program the desired closing speed with two regulating valves. One from about 115° to 15° and the other from about 15° to 0°. The fixing of the cover to the cement case with two pre-set positions allows the door closer installation without cutting the cover on site back stop standard at 120°.



## Door Hardware

### FLOOR SPRING: BDD-4-M68

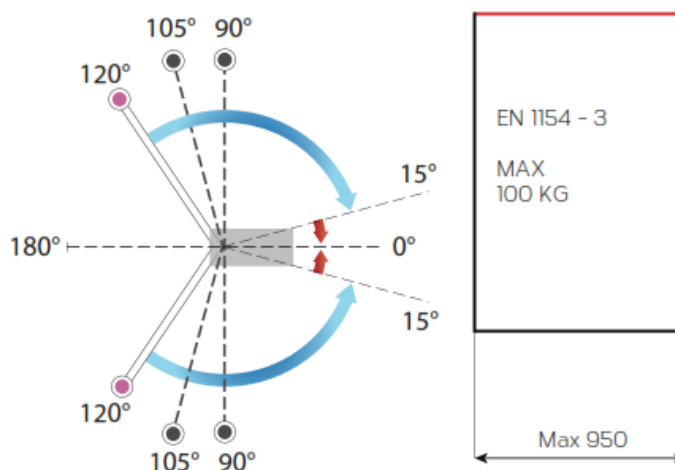


Standard finishes

Stainless steel

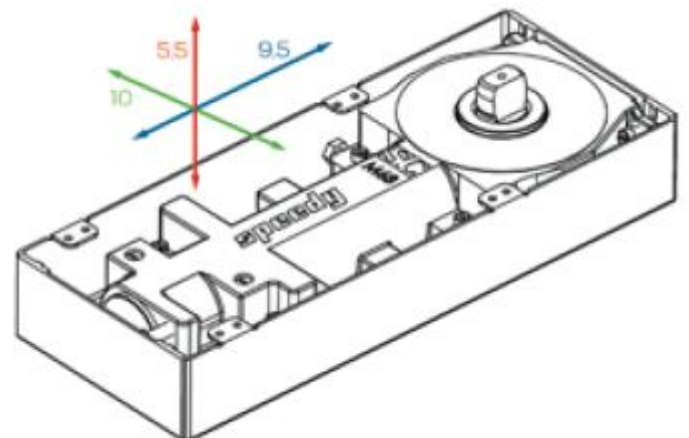
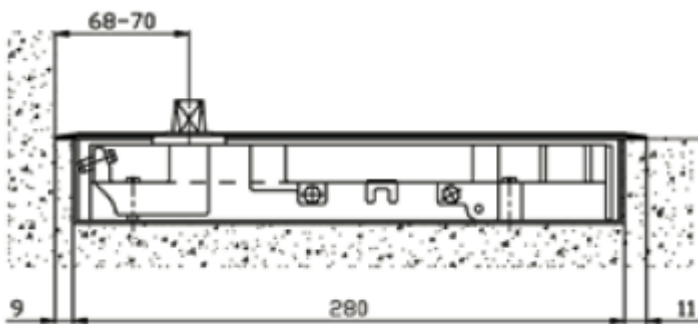
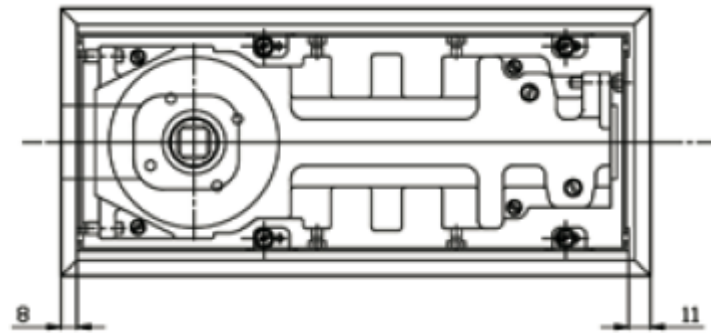
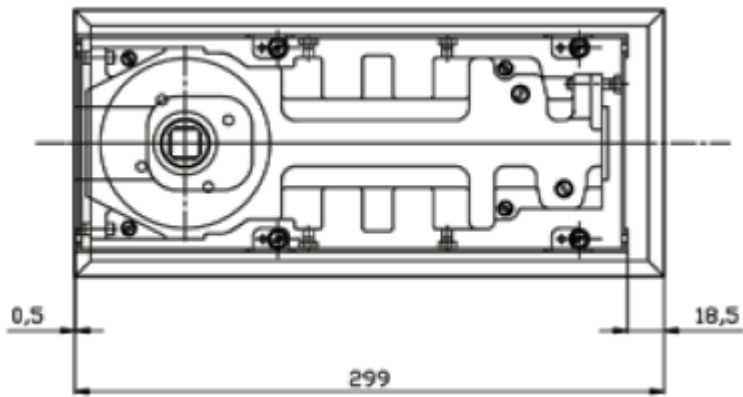
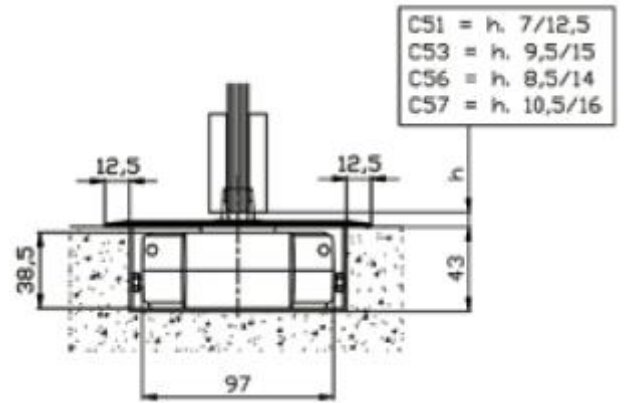
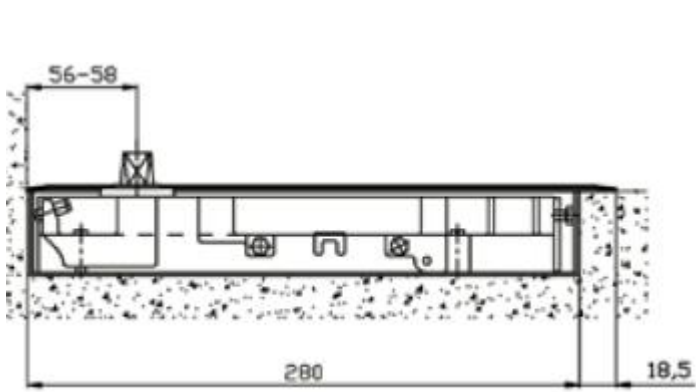
● Hold-open

● BACK-STOP AT 120°



Maximum door width	Exterior	Interior
Red Strength	850 mm	950 mm
Maximum door weight	100 Kg	
Dim. of cement case (mm)	110 x 280 x 43	
Weight of package	5.0 Kg	

## Door Hardware



Thank you for your attention